

創綠色環境向未來負責
 Keeping the world green forever and being responsible for the future

LM-QHB Type Submersible Reflux Pump



Due to constantly progressive technology,Lamsun has the right to amend the design,without prior notice.



Lamsun Fluid Technology Pte.Ltd.

Tel:+6560110604

Phone:+6581506618

E-mail:contact@lamsun-pump.com

Web:http://www.lamsun-pump.com

Add:55 AYER RAJAH CRESCENT,#02-02,SINGAPORE

Post Code:139949

Lamsun Fluid Technology Pte.Ltd.

Product Introductions

The submersible reflux pump of QHB series is developed based on the production technique of submersible agitator. It is a special equipment for the reclamation of the mixed liquids, denitrification, denitridation and nitrogen removal in Class II sewage treatment plant as well as the environments that require short delivery lift and large discharge in the ground drainage projects.

Type Code

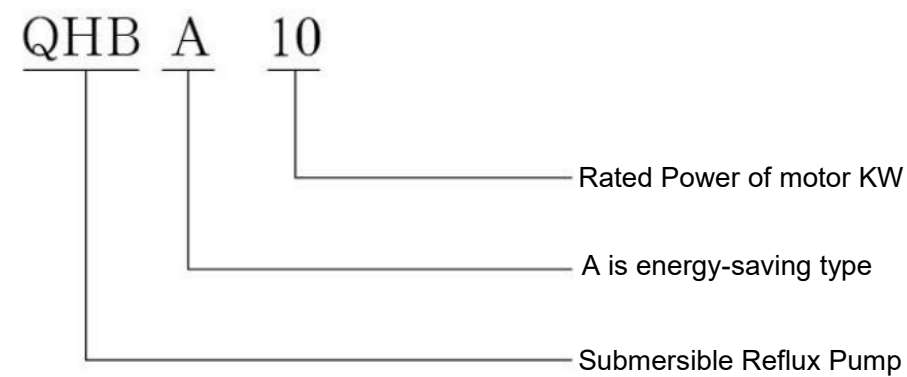


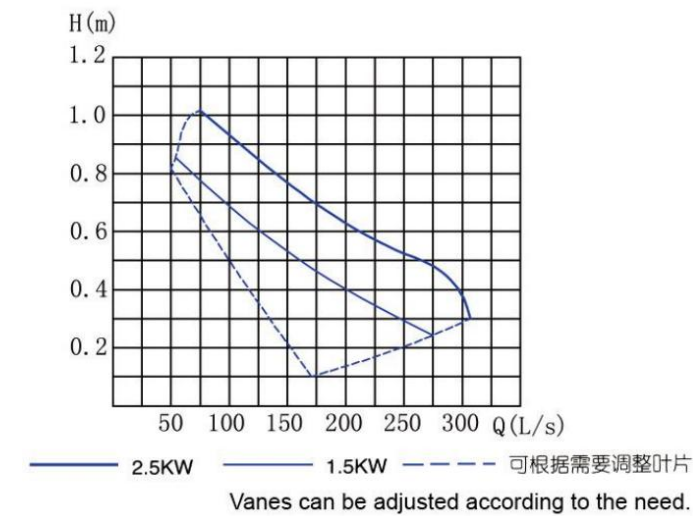
Table of Product Technical Performance

Type	Motor power (KW)	Rated current (A)		Impeller diameter(mm)	Protective class	Insulation class	Nominal diameter φ(mm)
		QHB	QHBA				
QHB1.5	1.5	5.2	3.7	400	IP68	F	400
QHB2.5	2.5	7	5.6	400	IP68	F	400
QHB4	4.0	14	8.6	620	IP68	F	600
QHB5	5.0	19	11	620	IP68	F	600
QHB7.5	7.5	28	15	620	IP68	F	600
QHB10	10	32	22	620	IP68	F	600
QHB15	15	39	30	620	IP68	F	600
QHB18.5	18.5	-	36	760	IP68	F	740
QHB22	22	-	42	760	IP68	F	740

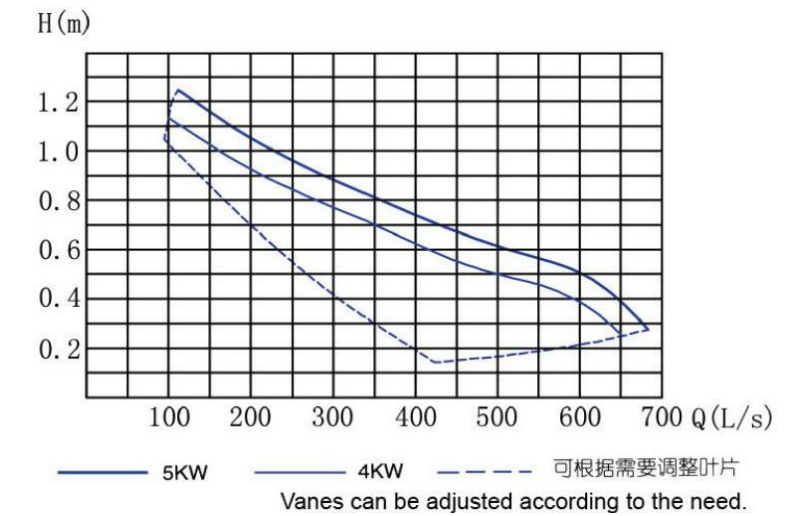
Performance Curve

This curve indicates the features of the pump, excluding the loss of the diffusing tubes as well as the inlet and outlet.

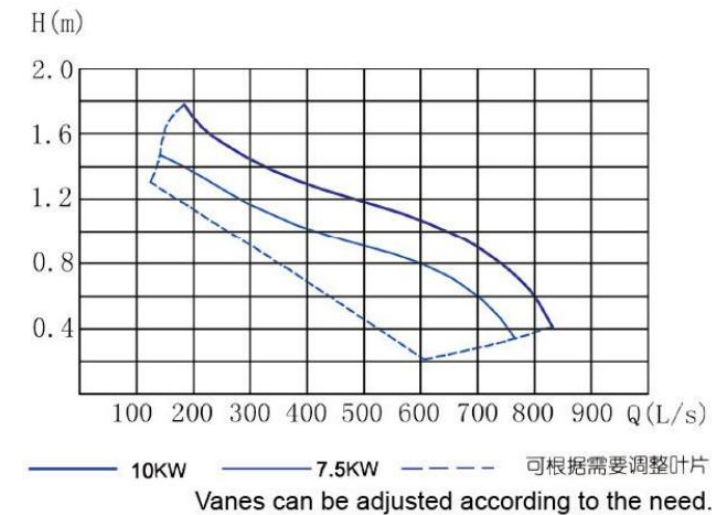
QHB1.5 QHB2.5



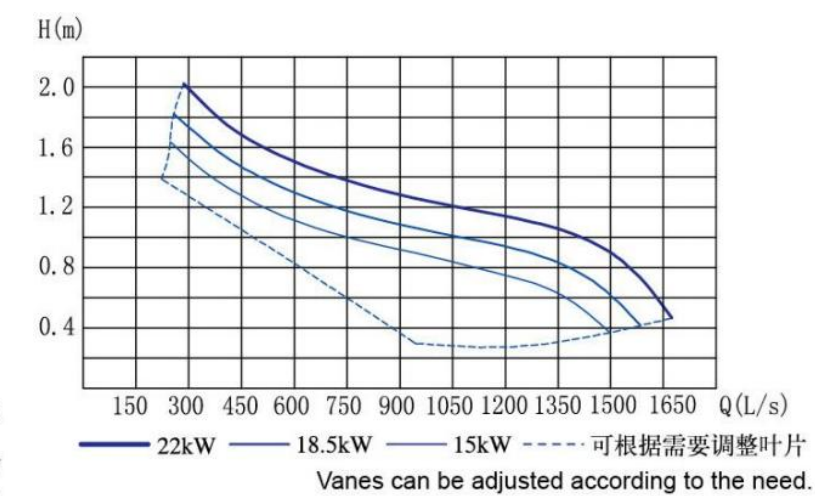
QHB4 QHB5



QHB7.5 QHB10



QHB15 QHB18.5 QHB22



■ Product Installation

Special Warning to the Users:

Correct installation and usage is a basic guarantee for long-term and normal operation of the pump.

Submersible reflux pump employs automatic coupling installation system which can be quickly lifted without any mechanical dismantling, is very convenient and facile.

Except the wall-threading pipe need to be pre-embedded, the guide rod and lifting rod will connect with the pond wall by expansion bolts, no need for any pre-embedded parts.

Pre-embedded parts and flap valve shall be purchased and installed by the users.

The user can optionally select the reflux pump horizontal installation or vertical installation.

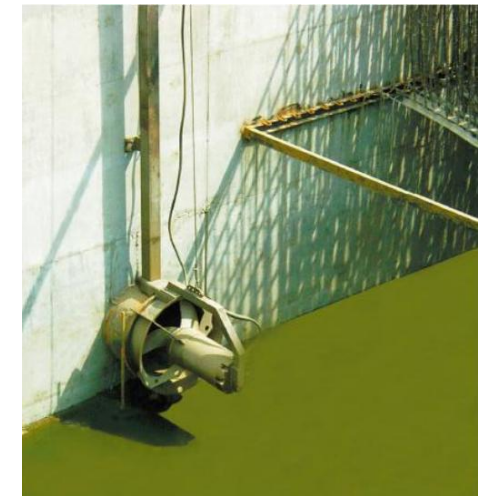


■ Installation Dimensions

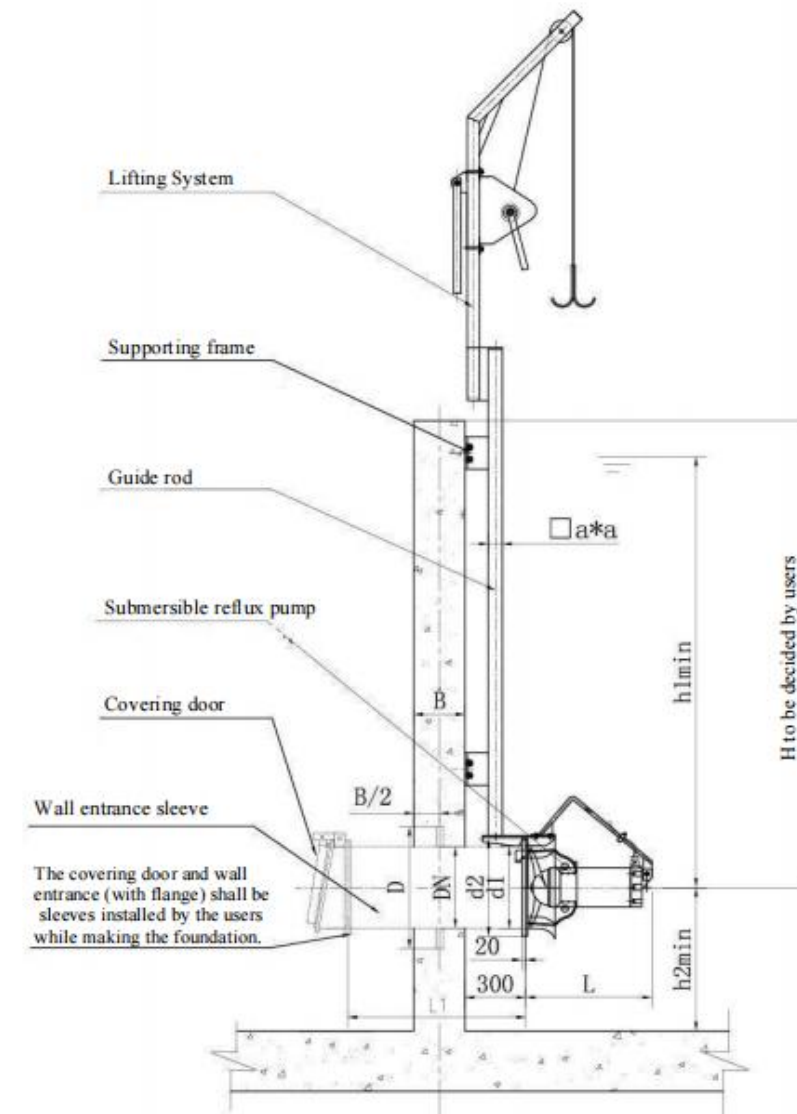
Type Parameter	d1	d2	D	DN	L	h1	h2	a	B	L1
QHB1.5	406	480	600	400	620	750	350	70	≥380	To be decided by the users.
QHB2.5	406	480	600	400	620	750	350	70		
QHB4	632	710	800	600	840	1200	550	100	≥450	
QHB5	632	710	800	600	840	1200	550	100		
QHB7.5	632	710	800	600	920	1200	550	100		
QHB10	632	710	800	600	920	1200	550	100		
QHB15	632	710	800	600	920	1200	550	100	≥480	
QHB18.5	832	890	980	800	1260	1300	600	100		
QHB22	832	890	980	800	1380	1300	600	100		

■ Product Characteristics

1. Special design according to the operating mode of short lift and large discharge.
2. The main equipment employs punching structure resulting in good hydraulic performance and high efficiency.
3. The integrated lift design can realize the quick installation underwater.
4. Make use of dual mechanical sealing and multiple electro-mechanical protectivefunction to improve the operating reliability.



■ Installation Diagram



■ Product Usage Conditions

1. The temperature of the medium shall not be higher than 40℃ during the continuous operation.
2. The pH value of the medium shall be 5~9.
3. The maximum depth of submersion shall be 10m.

